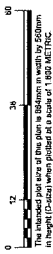


PLAN OF SUBDIVISION OF LOT 8, SEC 14, TP 28, SDYD, SDYD, PLAN EPP116470 AND PART OF LOT 12, SEC 14, TP 28, SDYD, PLAN EPP116470

BCGS 82E.073  
SCALE 1:800 METRIC



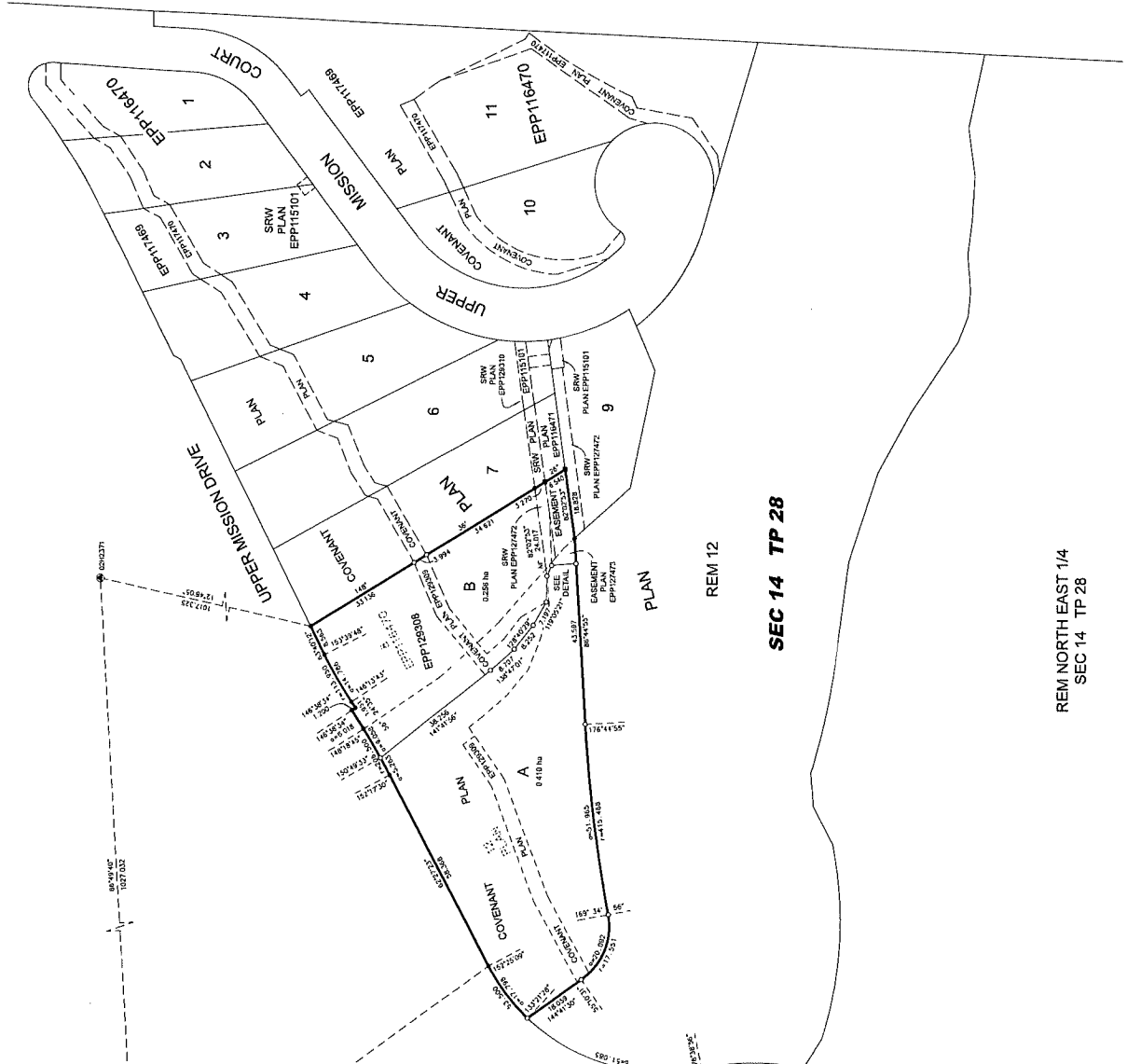
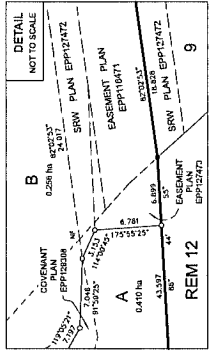
The indicated plot size of this plan is within a tolerance of  $\pm 50$ mm in height (width) when plotted at a scale of 1:800 METRIC.

- LEGEND**
- Domatic Control Monument Found
  - Domatic Control Monument Proposed
  - Domatic Standard Level Peg Found
  - Domatic Standard Level Peg Set
- Distances shown are horizontal, ground-level distances, in meters and footmarks thereat.
- Registered Survey Act No. 4, City of Kelowna, British Columbia, 1996, s. 11(1).
- Plan EPP116470 and are related to the official metric of UTM Zone 11.
- The UTM coordinates and estimated absolute accuracy obtained are defined from the NAD83 published coordinates 0242371 and 0242371 for generic control monument 0242371.
- This plan shows horizontal ground-level distances unless otherwise specified. To compute grid distances, multiply observed distances by the scale factor of 0.99992525 which has been derived from geoidetic control monument 0242371.

Point	Northing	Easting	Accuracy	Category
0242371	551868.828	317851.696	0.01	Control
0242372	551868.828	317851.696	0.01	Control

Point	Northing	Easting	Accuracy	Category
0242371	551868.828	317851.696	0.01	Control
0242372	551868.828	317851.696	0.01	Control

UTM COORDINATES (4.0 E.C.T. UTM ZONE 11) COORDINATES



SEC 13 TP 28

REM NORTH WEST 1/4  
SEC 13 TP 28

SEC 14 TP 28

REM NORTH EAST 1/4  
SEC 14 TP 28

This plan has been approved by the Planning and Development Committee of the City of Kelowna. The plan is subject to the terms and conditions of the Land Use Bylaw and the Official Community Plan. The plan is subject to the Regional District of Central Okanagan. The field survey was completed on the 12th day of May, 2023. Source: Paracal, BC25 9981

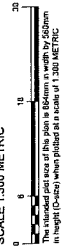


REFERENCE PLAN OF COVENANT OVER PART OF LOT A AND LOT B, SEC 14, TP 28, SDYD, PLAN EPP127471.

PURSUANT TO SECTION 99(1)(c) OF THE LAND TITLE ACT

BCGS 82E.073

SCALE 1:300 METRIC

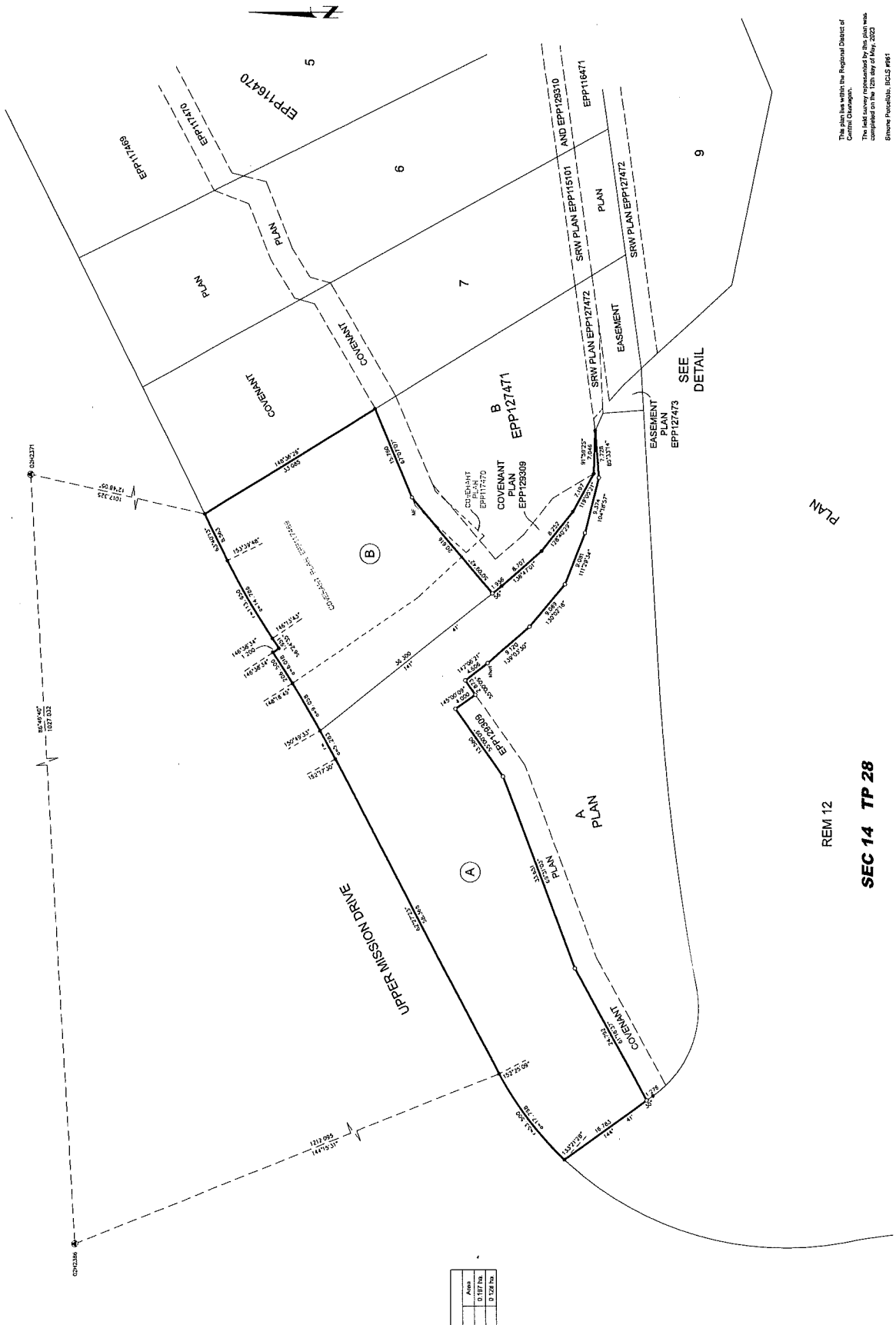


LEGEND

- Denotes Control Monument Found
- Denotes Control Monument Proposed
- Denotes Standard Iron Post Set
- Dashed lines show horizontal ground-level distances, in metres and stadia-like format.
- Integrated Survey Area No. 4, City of Kelowna.
- MNS1(CSR) 4.0.0 BC.1.
- Grid heights are derived from georeferenced plan coordinates and are referred to the central meridian of UTM Zone 11N.
- The UTM coordinates and extracted, geoidless, secondary adjustments are derived from the MNSCOY (Provincial) coordinates and are referred to the geoidless, secondary adjustments of the MNSCOY.
- The plan shows horizontal ground-level distances, unless otherwise specified. To compare grid distances, multiply ground-level distances by the average combined factor of conversion from ground-level to grid distances.
- Measurement: MNSCOY.

Point	Northing	Easting	Accuracy
SD24271	5518864.238	319041.886	0.01
SD24286	5518812.090	319039.514	0.01

BOOK OF REFERENCE		Area
'X'	LOT A, SEC 14, TP 28, SDYD, PLAN EPP127471	0.107 ha
'W'	LOT B, SEC 14, TP 28, SDYD, PLAN EPP127471	0.126 ha



PLAN

REIM 12

SEC 14 TP 28

The plan lies within the Regional District of Central Okanagan.  
The field survey represented by this plan was completed on the 12th day of May, 2023.  
Enforce: Proportion: 1:300 1/891

REFERENCE PLAN OF EASEMENT OVER PART OF LOT B, SEC 14, TP 28, SDYD, PLAN EPP127471.

PURSUANT TO SECTION 99(1)(e) OF THE LAND TITLE ACT

BCGS 82E:073

SCALE 1:300 METRIC



LEGEND

- Denote Control Monument Found
  - Denote Standard Iron Post Found
  - Denote Standard Lead Plug Found
- Distances shown are horizontal, ground-level distances, in metres and decimals thereof.

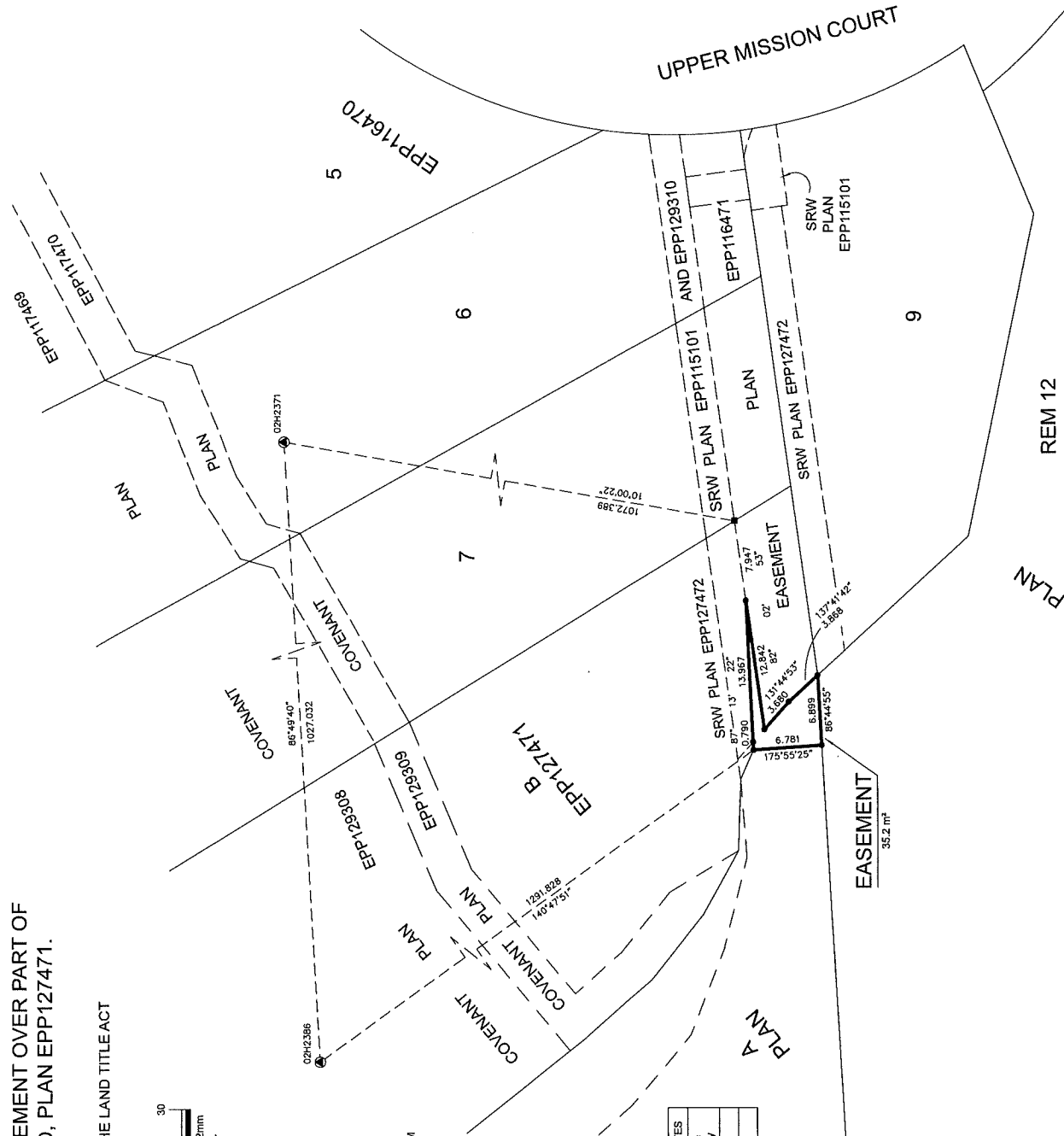
Integrated Survey Area No. 4, City of Kelowna, NAD83(CSRS) 4.0.0.BC.1.

Grid bearings are derived from georeferenced plan EPP116470 and are referred to the central meridian of UTM Zone 11.

The UTM coordinates and estimated absolute accuracy achieved are derived from the ITRF00 published coordinates and standard errors for geodetic control monuments 02H2386 and 02H2371.

This plan shows horizontal ground-level distances unless otherwise specified. To compute grid distances, multiply ground-level distances by the average combined factor of 0.9999255 which has been derived from geodetic control monument 02H2371.

Point	NAD83(CSRS) 4.0.0.BC.1 UTM ZONE 11 COORDINATES		Absolute Accuracy
	Northing	Easting	
02H2371	5518869.528	319341.896	0.01
02H2386	5518872.999	318316.514	0.01



This plan lies within the Regional District of Central Okanagan. The field survey represented by this plan was completed on the 12th day of May, 2023. Simone Porcellato, B.C.L.S. #861

SEC 14 TP 28